

LASER ENGRAVING AND CUTTING MACHINE

BCL-X series



World brand



WIFI Control



Honors



3 Years warranty

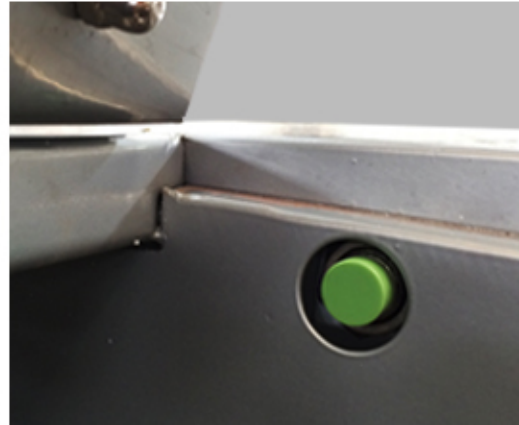


Multi-language
service

DETAILS INTRODUCTION



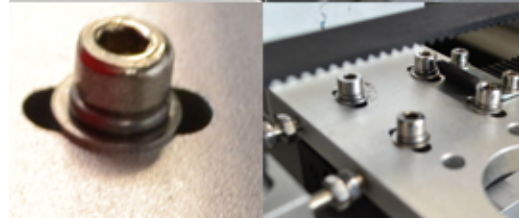
Big eye design Transparent acrylic window easy to observe work process Scientific 75° angle design accord with human operation habit



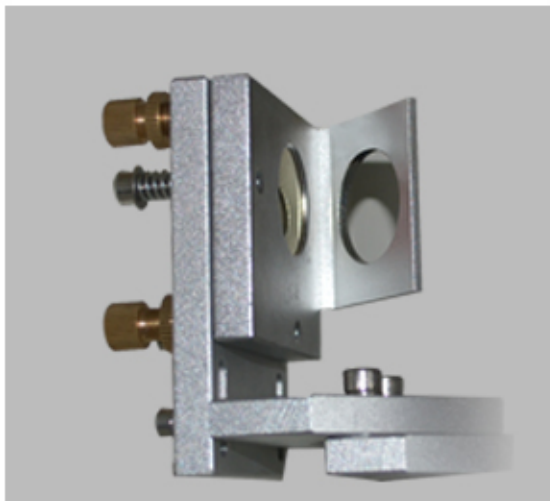
blade worktable



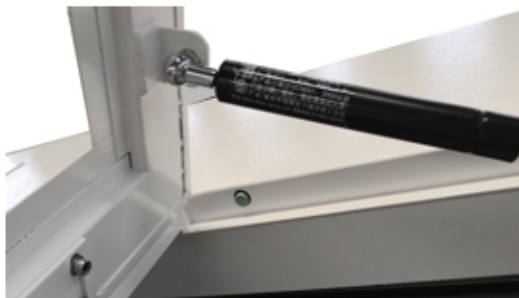
Aluminum alloy buttons



All screws are made by stainless steel



45° mirror adjustment set
Easy to adjust laser path



Door Sensor Interlock

PARTS AND FUNCTION



Japan Omron Electronic components



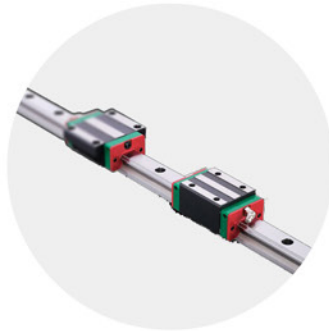
Stepper motor
High-precision
3-phase stepper motor drive



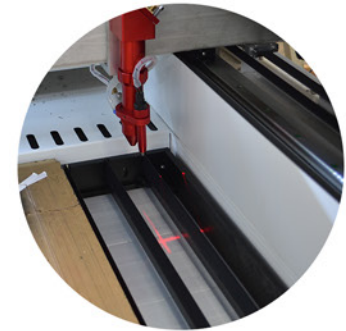
Laser tube
Stable laser path, life time
more than 10000 hours.



Taiwan belt
Stable transmission
easy to maintain



Taiwan Square rail
It features equal load ratings in
the radial, reverse radial and
lateral directions, and self-aligning
to absorb installation-error.



Red cross dot position system
Accurate to position
convenient to cut and engrave



Ultra-light X axis constructure design
Bodor's patent design to ensure
high-speed moving



LED light
Energy efficient highlight
long life time

MAIN FEATURES

9 BEST ADVANTAGES

1

High precision.
Use taiwan square rail,
famous 3-phase step motors

3

Strong body.
Machine frameworks are
made by square tubes.

5

Turn off the power to
continue engraving.
Cap protection

7

Professional control system
fast,friendly,easy to use

9

3 years warranty

2

3 in 1 closed beam,
simple and generous

4

"Big eye" design
Transparent acrylic window,75°
cover angle,easy to observe.

6

Professional control system
Offers fast cutting function
with shortest process path,
save time.

8

Long-life laser tube.
10000 hours life time!

LASER ENGRAVING AND CUTTING MACHINE BCL-X SERIES

MACHINE PARAMETER

Model	BCL1006X	BCL1309X	BCL1610X
Working Area	1000*600mm	1300*900mm	1600*1000mm
Laser Power	80W/100w/120w/150w		
Laser Type	CO2 Sealed Laser Tube ,10.6μm		
Cooling Type	Water Cooling		
Engraving Speed	0-60000mm/min		
Cutting Speed	0-40000mm/min		
Laser Output Control	0-100% set by software		
Min. Engraving Size	Chinese:2.0mm*2.0mm, English Letter: 1.0mm*1.0mm		
Highest Scanning Precision	4000DPI		
Locating Accuracy	≤ +0.01mm		
Controlling Software	DSP Control System		
Graphic Format Supported	DST PLT BMP DXF DWG AI LAS,etc		
Compatible Software	CORELDRAW,PHOTOSHOP, AUTOCAD,TAJIMA,etc.		
Drive System	High-precision 3-phase Stepper Motor		
Auxiliary Equipments	Exhaust Fan and Air Exhaust Pipe		
Power Supply	AC110V/220V+10%,50HZ/60HZ		
Working Environment	Temperature:0-45C,Humidity 5-95%(No Condensate Water)		

Application

Industries: Mould industry (construction mould, aviation and navigation mould, wooden mould), advertising, decoration, arts and crafts, electronics, electric appliances, etc.

Materials: Materials such as acrylic, wood planks(light planks,candlenut wood), bamboo ware, double color board, paper, leather, shell, coconut shell, ox horn, resin animal grease,ABS board, lamp shade, etc.

